

Move Beyond The Limits of LIMS

TrakCare Lab Enterprise



Make Your Laboratory a Modern Information-Driven, Connected Business

The nature of laboratory testing is changing rapidly, in multiple directions simultaneously:

- The scale of testing, driven by infectious disease outbreaks
- More market consolidation
- Greater automation
- The growth of point-of-care testing

These changes have prompted major shifts in where, when, and how testing takes place and results delivered. To deal with these demands and to survive in a rapidly changing landscape, laboratories need to constantly adapt delivery and business models, but it's not easy with a traditional laboratory information management system (LIMS).

TrakCare® Lab Enterprise lets you move beyond these limits.

Business Transformation and Interoperability

Whether you are a healthcare organization with enterprise laboratory services, an independent laboratory organization or a large laboratory service provider, TrakCare Lab Enterprise enables you to manage the laboratory as an agile, knowledge-driven business, and adapt to changes as they arise. Browser-based and built on InterSystems IRIS®, a single, highly scalable database, TrakCare Lab Enterprise supports business transformation and interoperability at its core, and provides:

- Visibility and control over your processes in the delivery of laboratory services
- Insights to help you standardize and streamline workflows and operating procedures to reduce waste, and lower costs
- Faster, more reliable, and more comprehensive processing and reporting of results
- The ability to monitor performance against key performance indicators (KPIs) in real time
- Accommodation for a high-volume of concurrent users, and enterprise scalability as your business grows

Is TrakCare Lab Enterprise for You?

TrakCare Lab Enterprise simplifies the work of hospital administrators, ordering clinicians, and laboratory managers. Here are just a few of the ways it can improve a workday.

For Hospital Administrators

- Minimize supply waste and prevent unnecessary specimen collections with “smart” specimen reusability algorithms
- Save time and money, and reduce errors, with full integration of order communication and results publication between your lab and hospital departments or referring hospitals
- Gain real-time visibility into lab performance with automated monitoring of user defined KPIs, such as turnaround time and costing at the patient, request, and test level
- Protect your investments in software and training by linking your own applications, such as specialty ordering, donor management, blood administration, billing, and reporting, into TrakCare Lab Enterprise



For Ordering Clinicians

- Support ordering clinicians with report formatting customizable to their specifications
- Maximize report clarity and support clinical interpretation of results with multi-level and HTML formatted result commenting
- Ensure that ordering clinicians are the first to know of results in the EPR via HL7® test item integrations and automatic notifications
- Drive lost specimen events to zero with barcode confirm and enterprise wide specimen tracking from collection to completion
- Reduce errors by identifying the right patient the first time with Positive Patient ID in phlebotomy, and guided specimen collection and container labeling
- Increase convenience and clinician satisfaction by customizing Test Panel content by ordering provider, current location, or clinical condition

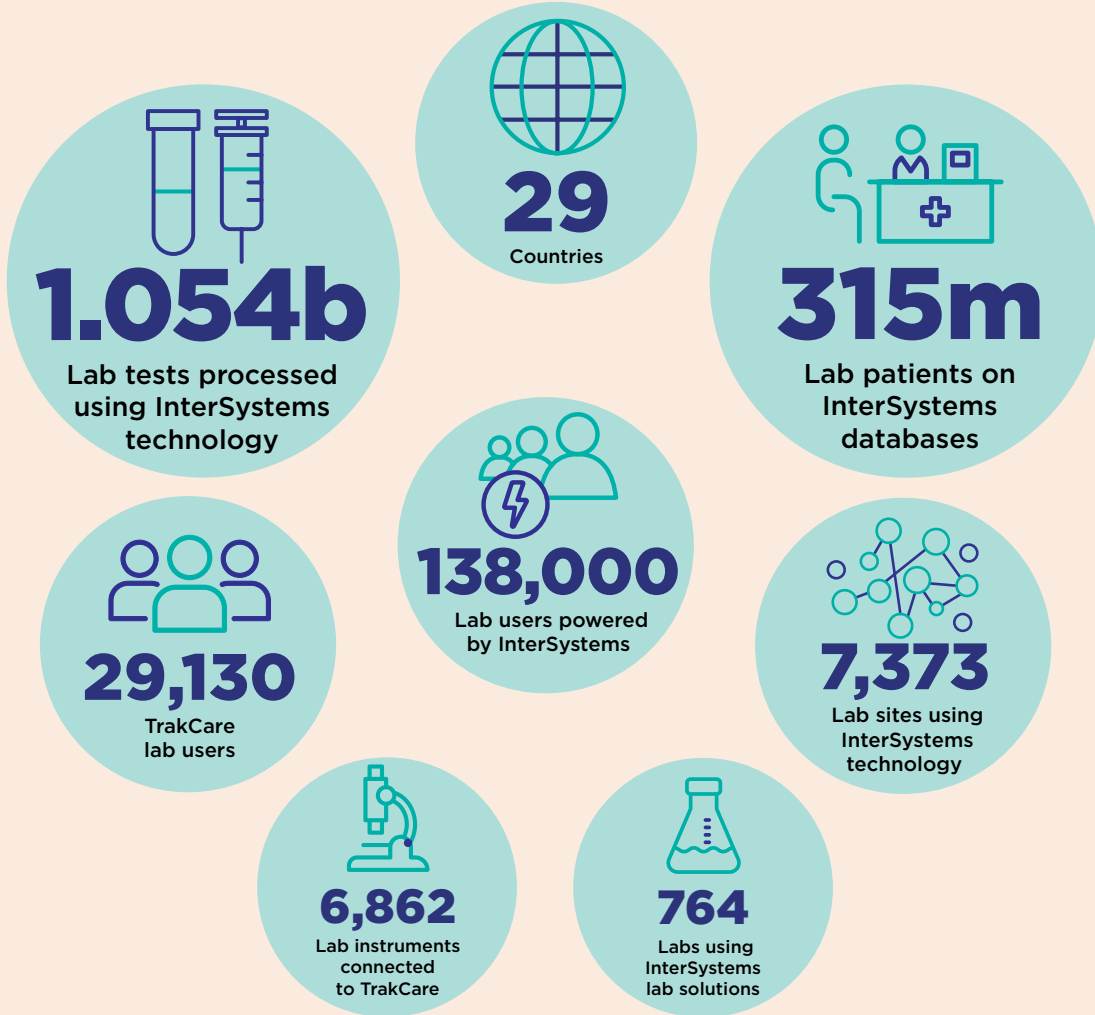


For Laboratory Managers

- Eliminate the hassle of faxes by integrating orders and results data into external systems using the HL7 interoperability standard
- Enable paper-free workflows with full visibility of testing and electronic documentation of all operational procedures
- Reduce your workload and keep an eye on performance with KPIs on comprehensive auditing and compliance with standard operating procedures
- Improve use of technology, such as Intelligent Result Entry, Auto Authorization, and Middleware Result Management to reduce manual data entry and labor requirements



Around the world InterSystems is powering the data driven lab,
providing healthcare professionals with information
to make better decisions



Gain Insight to Drive Improved Business Performance

Because TrakCare Lab Enterprise measures the performance of a laboratory business and facilitates planning, it is a critical management tool for continuous improvement. You can adopt recognized strategic performance management approaches, such as balanced scorecards, and readily track KPIs using built-in or user-defined dashboards.

For example, consider a typical balanced scorecard combining four distinct perspectives: Financial, customer, internal process, and organizational capacity.

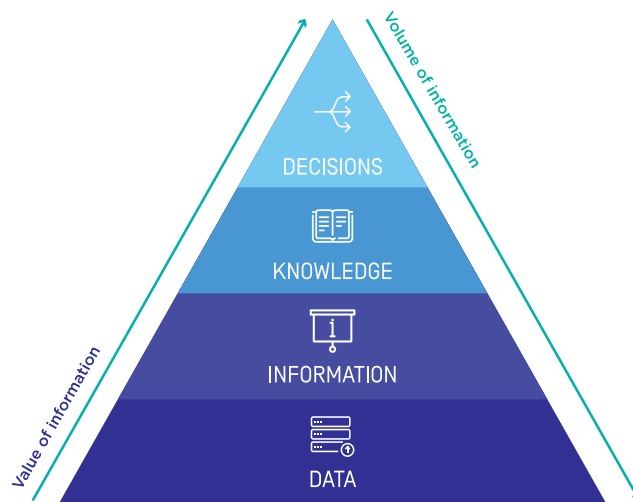
Financial

Laboratories no longer need to rely on average-cost structures to estimate operational budgets. With support for activity-based costing, unlimited coding schemes, and multiple site configurations within a single system, TrakCare Lab Enterprise enables precise budget management across your organization. Accurately capture test item, patient case, specialty, and stakeholder costs as work is performed, with no additional staff input required. Built-in KPIs track billing performance and cost management.

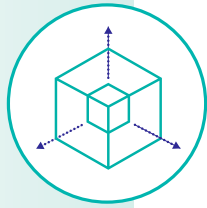


Customer

The timely and reproducible delivery of lab results improves clinical outcomes and the efficiency of care provider organizations. Traditional systems measure turnaround times only at the individual test level. TrakCare Lab Enterprise tracks all work involved in a laboratory protocol involving multiple resources and processes to accurately measure timing for all testing stages. Built-in KPIs include queue performance for orders and results, overall turnaround times, and turnaround times for urgent versus non-urgent items.

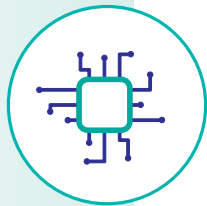


TrakCare Lab Enterprise empowers you to make informed decisions that generate value for your business and foster continuous improvement. Armed with comprehensive operational data, it helps you turn near-real-time information into knowledge that will lead to better decisions.



Internal Process

Unlike traditional systems – which do not measure compliance with laboratory operating procedures – TrakCare Lab Enterprise records compliance at every stage of a documented process. With records available on a test-by-test basis, you can review results and perform retrospective compliance analysis. You can use built-in analytics capabilities to assess and modify testing protocols to improve efficiency and throughput. Built-in KPIs track cleaning and maintenance of equipment, compliance with recognized quality standards, and protocol compliance.



Organizational Capacity

TrakCare Lab Enterprise empowers you to understand peaks and troughs in your organization's workload. Several features help you improve workflows:

- Single functions supporting complete laboratory processes without menus
- Choice of device to support the laboratory's mobility requirements
- Keyboard-only interaction if required within a browser-based solution
- Access to documented methods, as well as reagent and collection instructions
- Configuration access, enabling agile methodology and resource changes

Because you can now see your bottlenecks, you can quickly make changes that maintain or improve operational capacity. Built-in KPIs include procedure and work area turnarounds, equipment use, and overall workload.

TrakCare Lab Enterprise versus Standard LIMS

| | TRAKCARE LAB ENTERPRISE Focus is on service delivery AND business improvement | LIMS Focus is on service delivery of lab results |
|---------------------------------------------------------------------------------------|-----------------------------------------------------------------------------------------|------------------------------------------------------------|
| Support for integration of third-party order communications | ● | ● |
| Specimen reception and acceptance | ● | ● |
| Specimen tracking and traceability | ● | |
| Aliquot management and guidance | ● | |
| Results entry, including integration with laboratory equipment | ● | ● |
| Clinical verification | ● | ● |
| Doctor report production | ● | ● |
| Automated, configurable clinical interpretation comments | ● | |
| Ad hoc reporting and statistical analysis of data | ● | ● |
| Integrated order communications and result publication | ● | |
| Full visibility of testing, including all nonresult-type procedures | ● | |
| Granular visibility of workload and costing at a patient, request, and test level | ● | |
| Compliance with standard operating procedures transparently captured during operation | ● | |
| Automated monitoring of user-defined KPIs | ● | |
| Integrated instrument and equipment maintenance records | ● | |
| Integrated pathology patient record for external consumers of the service | ● | |
| PoCT integrated into the pathology record | ● | |

